



Leopold® Fiberglass Wash-Water Troughs

- n Maintenance-free construction
- n Durability for long service life
- n Reinforced for strength and stiffness
- n Resin-rich interior surface for even flow
- n Available in a wide range of capacities
- n Easy, economical installation with no costly forming work

Leopold fiberglass wash-water troughs are employed in water and wastewater filters to provide uniform removal of wash water during backwashing. They are available in a wide selection of carrying capacities to meet any design requirement (see the back of this sheet).

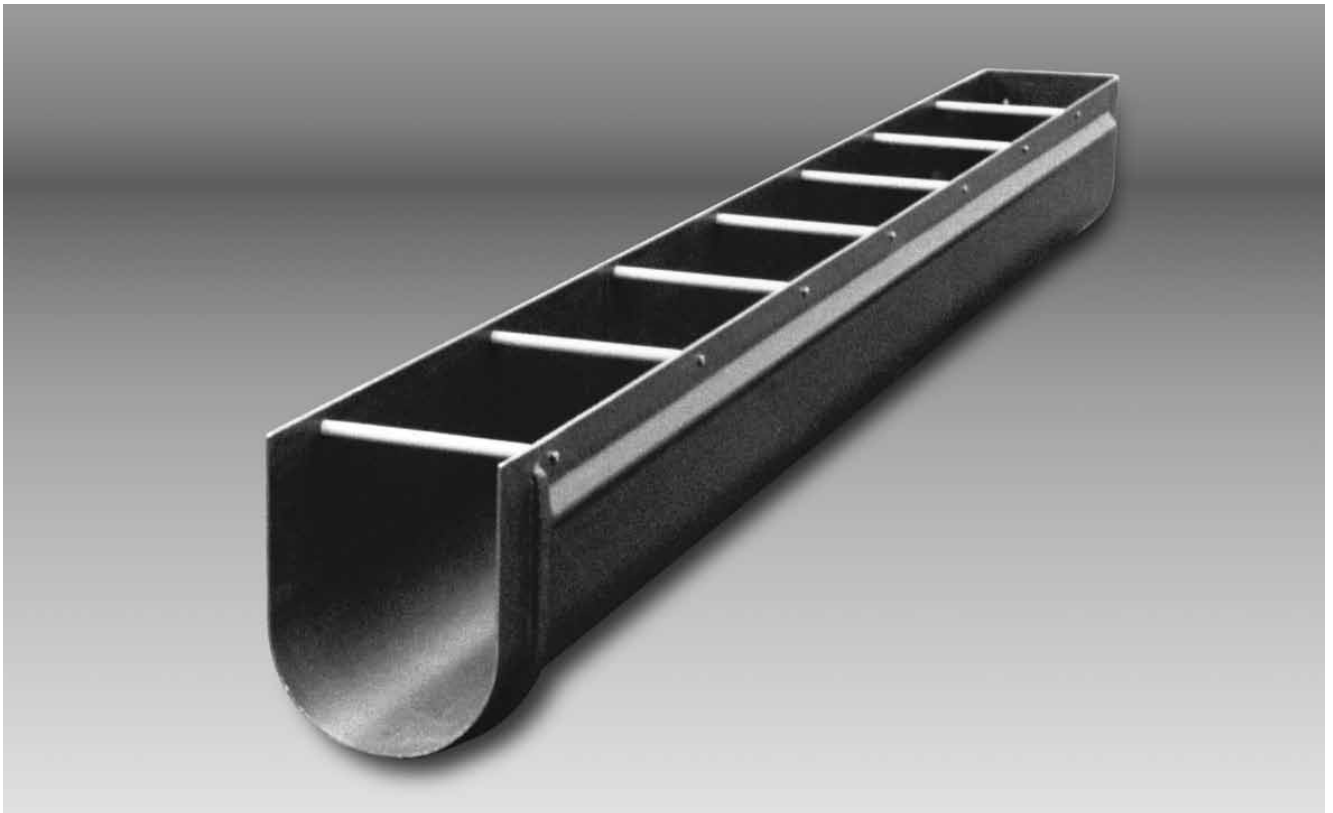
Molded of densely laminated fiberglass-reinforced plastic (FRP), Leopold wash-water troughs are corrosion-resistant and constructed for maintenance-free durability and long service life. All mounting brackets, hardware, and stabilizers are stainless steel.

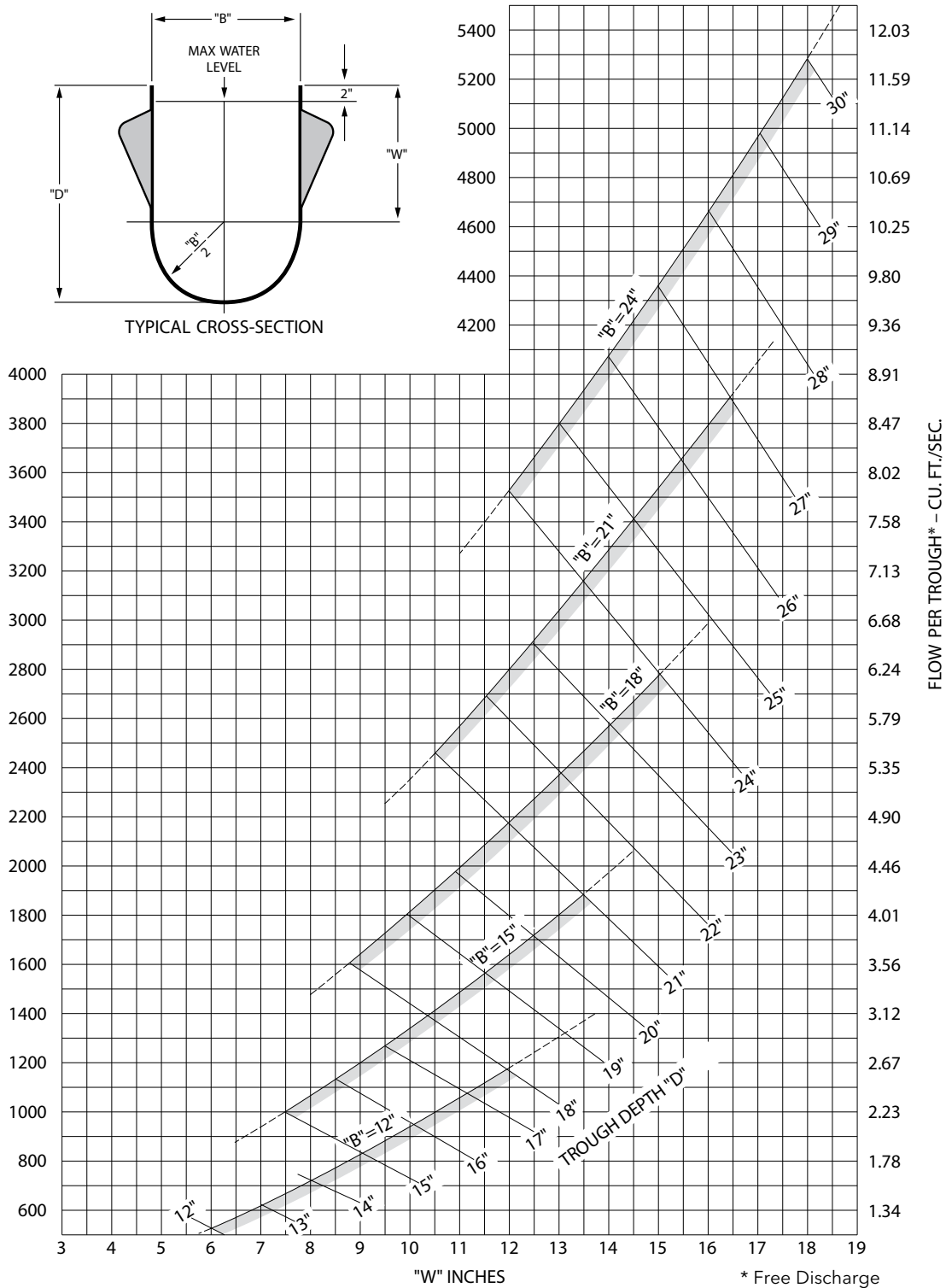
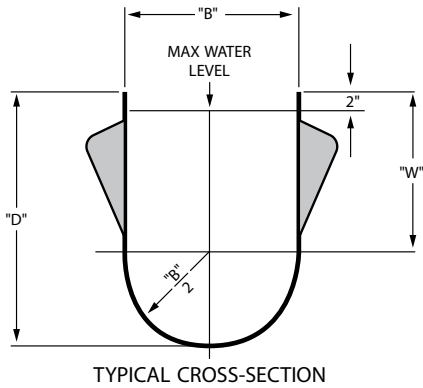
Leopold FRP wash-water troughs are designed and manufactured for rigidity and dimensional accuracy. Proportioned for excellent beam strength, Leopold FRP wash-water troughs have triangular-shaped, longitudinal stiffeners integrally molded into the exterior sidewall for longitudinal rigidity. Fiberglass thickness is at least 1½ times the nominal thickness at locations of supports such as saddles, as well as at end flanges and blind ends. One-inch horizon-

tal stiffener bars on 2-foot centers enhance the structural rigidity.

The inner surfaces of Leopold troughs are smooth, and resin-rich-coated to minimize flow resistance. The top edges of each trough section are level and parallel to the specified tolerances to help uniformly match a still water surface at the desired overflow elevation.

Leopold troughs are available with fixed, adjustable flanged ends, or with integrally mounted water stops. Adjustable V-notch or straight-edge weir plates are also available. The weir plates are made of maintenance-free fiberglass-reinforced plastic, match-die molded to ensure excellent dimensional accuracy.





Xylem, Inc.
227 South Division Street
Zelienople, PA 16063
Telephone: (724) 452-6300
Fax: (724) 452-1377
www.xylem.com

